



***Ambient Air Quality and noise Measurements Report  
For Pressure reduction station Project at  
Quweisna, Monofeya Governorate***

***Petrosafe Environmental Solutions  
January 2020***

# CONTENTS

CONTENTS .....	2
1. INTRODUCTION .....	3
1.1 Objectives.....	3
1.2 Scope of Work.....	3
1.2.1 Sampling strategy.....	3
1.3 Location.....	4
2. LEGISLATION AND REGULATORY FRAMEWORK .....	5
2.1 National and International Legislation .....	5
3. METHODOLOGY .....	7
3.1 Ambient air quality .....	7
3.2 Noise Measurement Methodology .....	10
4. RESULTS .....	12
4.1 Analysis of air quality Results .....	15
5. NOISE LEVELS RESULTS .....	16
6. CONCLUSION .....	17
7. FUTURE RECOMMENDATION.....	18
8. REFERENCES.....	19
Figure 1-1 location map EETC of point of measurements .....	4
Figure 3-1 ambient air quality monitoring system.....	7
Figure 4-1 NO <sub>x</sub> variation in the location .....	13
Figure 4-2 SO <sub>2</sub> variation in the location.....	14
Figure 4-3 CO variation in the location .....	14
Table 1-1 Locations Coordinates.....	4
Table 2-1 Applicable national permissible limits for ambient air quality levels for rural area .....	5
Table 2-2 WHO Ambient Air Quality Guidelines,.....	6
Table 4-1 daily average results (µg/m <sup>3</sup> ).....	13
Table 5-5-1 Ambient Noise Levels Readings at First Location P1 8 hours average.....	16

## 1. INTRODUCTION

Air quality and noise monitoring have been carried out as part of the description of the existing environment and the base line data for project at **Quweisna, Monofeya Governorate**.

Air quality monitoring has been undertaken for the pollutants of primary concerns (NO<sub>2</sub>, SO<sub>2</sub>, CO, T.S.P and PM<sub>10</sub>); in order to better characterize the ambient air quality, as part of the environmental measurements required. Where, eight hours average measurements of one hour interval were conducted for carbon monoxide (CO), nitrogen dioxide (NO<sub>2</sub>), sulphur dioxide (SO<sub>2</sub>), total Suspended Particulates (T.S.P) and particulate matter (PM<sub>10</sub>), for five specific locations, where the air quality complies with the national guideline

s for all the analysed parameters. The site-specific air quality measurements had conducted using Standard ambient air quality monitoring instruments under the supervision of experienced specialists. Noise levels had conducted as per the international standard using type 1 precision noise level meter.

### 1.1 Objectives

The overall objectives of this monitoring round are to:

- Assess/confirm compliance of the air quality in the ambient environment with relevant national guidelines;
- identify any non-compliance issues, if any; and
- Provide general conclusions based on analysis results.

### 1.2 Scope of Work

- The scope of work of the present monitoring includes the sampling and analysis of active air and noise in the surrounding area as to distinguish whether air quality has been influenced by the project activities or not.
- The measurements will be conduct in one location within the boundaries of the proposed project site.

#### 1.2.1 Sampling strategy

The selection of the active air measurement location has based on the prevailing wind direction; site Topography, the future layout of the proposed project components and the location of the nearest sensitive receptors with respect to the store plots. Moreover, the selection had based on the guidelines stated in the American Society for Testing Materials (ASTM) reference method<sup>1</sup>.

The following ambient air pollutants where the target parameters, which will be measured during the monitoring program:

- TOTAL Suspended Particulate (TSP)
- Thoracic particulate ( PM<sub>10</sub> )
- Nitrogen dioxide NO<sub>2</sub>.
- Sulfur dioxide SO<sub>2</sub>.
- Carbon monoxide CO.

Moreover, location of the measurements has shown in the figure below

---

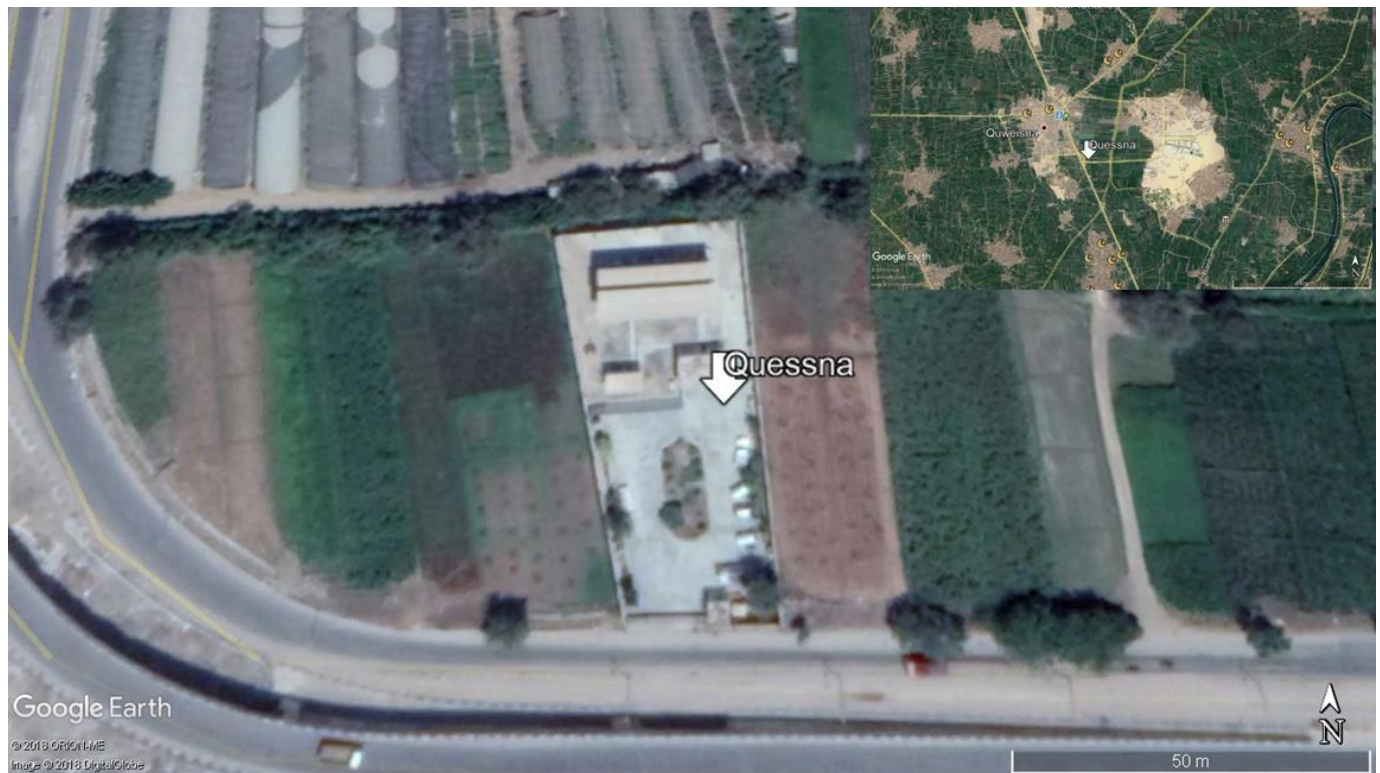
<sup>1</sup> D1357-95 (Reapproved2000) Standard Practice for Planning the Sampling of the Ambient Air

### 1.3 Location

The GPS coordinates of the as Ambient Air (P) measurement locations

**Table 1-1 Locations Coordinates**

Location	N coordinates	E coordinates
Quweisna PRS	30° 32' 07.8" N	31° 08' 55.7" E



**Figure 1-1 location map of measurements at Quweisna**

## 2. LEGISLATION AND REGULATORY FRAMEWORK

### 2.1 National and International Legislation

The results of ambient air quality measurements were compared to the national limits set in Annex 5 of the Executive Regulation (D1095/2015) and the guideline values of world health organization (WHO) for the ambient air quality.

Table 2-1 and Table 2-2 lists the corresponding applicable national and international ambient air quality permissible limits.

Table 2-1 Applicable national permissible limits for ambient air quality levels for rural area

Pollutant	Average Period	Egyptian Standards ( $\mu\text{g.m}^{-3}$ )	Egyptian Standards (ppm)
Sulphur dioxide ( $\text{SO}_2$ )	1 hour	350	0.1337
	24 hours	150	0.0573
	Annual	60	0.0229
Carbon monoxide	1 hour	30,000	26
	8 hours	10,000	9
Nitrogen dioxide ( $\text{NO}_2$ )	1 hour	350	0.2
	24 hours	150	0.08
	Annual	60	0.032
TOTAL suspended particulate T.S.P	24 hours	230	-----
	Annual	125	-----
Thoracic particles ( $\text{PM}_{10}$ )	24 hours	150	-----
	Annual	100	-----
$\text{PM}_{2.5}$	24 hours	100	-----
	Annual	70	-----

Table 2-2 WHO Ambient Air Quality Guidelines<sup>2,3</sup>

Pollutant	Average Period	Guideline value ( $\mu\text{g.m}^{-3}$ )
Sulphur dioxide ( $\text{SO}_2$ )	24 hours	125 (interim target 1) 50 (Interim target 2) 20 (guideline)
	10 minutes	500
Nitrogen dioxide ( $\text{NO}_2$ )	1 hour	200
	1 year	40
Thoracic particles ( $\text{PM}_{10}$ )	24 hours	150 (interim target 1) 100 (interim target 2) 75 (interim target 3) 50 (guideline)
	1 year	70 (interim target 1) 50 (interim target 2) 30 (interim target 3) 20 (guideline)
Ozone	8 hours daily maximum	160 (interim target 1) 100 (guideline)

<sup>2</sup> World Health Organization (WHO). Air Quality Guidelines Global Update, 2005. PM 24-hour value is the 99th percentile.

<sup>3</sup> Interim targets are provided in recognition of the need for a staged approach to achieving the recommended guidelines.



### 3. METHODOLOGY

#### 3.1 Ambient air quality

Ambient Air Quality Monitoring equipment is an integrated system of which includes several analyzers with data recording devices. A typical system would include gas analyzers for ambient air analysis, data recording, and signal transmission instrumentation.



Figure 3-1 ambient air quality monitoring system

#### Ambient air pollutants

The most common gaseous air pollutants (also known as "criteria pollutants") are carbon monoxide, sulfur oxides, and nitrogen oxides. These pollutants can be harmful to health and the environment, and cause property damage. To acquire baseline information on background levels of Thoracic Particulates, the team conducted four one-hour active sampling using a dust sampler. The sampler measures the respirable fraction of airborne dust (of particle size 0.1 to 10  $\mu\text{m}$ ) with a measuring range of 0.001 to 400  $\text{mg}/\text{m}^3$  and an accuracy of  $\pm 5\%$  of the reading. The levels measured and recorded would serve as baseline values for reference during future monitoring activities.

## Ambient air quality monitoring station specifications

### General Features

- Standard methods of measurement which means:
- SO<sub>2</sub> analyzer: ISO 10498 equivalent to( U.S.A EPA Reference method – EQSA-0486-60) – UV Fluorescence
- NO<sub>x</sub> analyzer: ISO 7996 equivalent to(U.S.A EPA Reference method – RFNA-1289-74) – Chemiluminescence
- CO analyzer: ISO 4224 equivalent to U.S.A EPA Reference method – RFCA-0981-54) – IR GFC
- PM<sub>10</sub> sampler: Flow volume sampler equivalent to(EPA method, Appendix J-Reference method FR)
- T.S.P low volume sampler equivalent to(EPA method, Appendix J-Reference method FR)

### Ambient Particulate Matter PM<sub>10</sub> sampler

- Approval and Certification: U.S.EPA (USA), UBA/ TUV (Germany), / Sira Certification Service
- Measuring Method: Sequential Particulate sampler
- Sampling on filter membranes, which can be used for further Chemical analyses as required by current regulations and standards.
- Active flow Control Flow range: 0-10 LPM
- Nominal flow: 5LPM Sampler
- Dimensions: 10" x 12" x 7" Sampler
- Weight: 9.8LBS (fully configured) Transport Case: 19.75" x 12" x 18"
- The analyzer should be equipped with batteries in order to avoid possible data losses due to power failures.
- Source: Beta Ray Source with appropriate activity
- Ranges: 0-500 µg/ m<sup>3</sup> (2.3 m<sup>3</sup>/ h operating flow rate); 0-1,000 µg/ m<sup>3</sup> (1 m<sup>3</sup>/ h operating flow rate)
- Lower Detectable Limit: ≤ 1.5 µg/ m<sup>3</sup> (24 hour cycle time, 2.3 m<sup>3</sup>/ h operating flow rate)
- Precision: ≤ 0.4 µg/ m<sup>3</sup> (24 hour cycle time, 2.3 m<sup>3</sup>/ h operating flow rate)
- Correlation Coefficient R > 0.98



### **Sulphur Dioxide SO<sub>2</sub> Analyzer** (Thermo Scientific SO<sub>2</sub> Analyzer model 43i-USA)

- Approval and Certification : U.S.EPA (USA), UBA/ TUV (Germany), / Sira Certification Service
- Measuring Method : UV Fluorescence Technology
- Ranges.: Auto ranging feature, Multiple Ranges to cover from 0 to 10 ppm (especially from 0 to 1 ppm)
- Zero Noise:  $\leq 0.5$  ppb
- Lower Detectable Limit:  $\leq 1$  ppb
- Zero drift (daily):  $\leq 1$  ppb
- Span drift (daily):  $\leq 1\%$  of full scale
- Response time: fast,  $\leq 100$  seconds
- ♦ Precision:  $\leq 0.5\%$  of reading
- Linearity:  $\leq \pm 1\%$  of full scale
- Operating temperature: not exceed 40 °C

### **Nitrogen Monoxide, Nitrogen Dioxide and Nitrogen Oxides NO, NO<sub>2</sub> & NO<sub>x</sub> Analyzer** (Thermo Scientific NO<sub>x</sub> Analyzer - Model 42i- USA)

- Approval and Certification: U.S.EPA (USA), UBA/ TUV (Germany), / Sira Certification Service
- Measuring Method.: Chemiluminescence Technology
- Ranges.: Auto ranging feature, Multiple Ranges to cover from 0 to 20 ppm (especially from 0 to 1 ppm)
- Zero Noise:  $\leq 0.2$  ppb
- Lower Detectable Limit:  $\leq 0.4$  ppb
- Zero drift (daily):  $< 0.5$  ppb
- Span drift (daily):  $< 0.5\%$  of full scale
- Response time: fast,  $\leq 100$  seconds
- Precision:  $\leq 0.5\%$  of reading
- Linearity:  $\leq \pm 1\%$  of full scale
- Operating temperature: not exceed 40 °C

**Carbon Monoxide CO Analyzer** (Thermo Scientific Carbon Monoxide CO Analyzer model 48i-USA)

- Approval and Certification: U.S.EPA (USA), UBA/ TUV (Germany), / Sira Certification Service
- Measuring Method: Non Destructive Infra-Red Gas Filter Correlation (IRGFC) Technology
- Ranges: Auto ranging feature, Multiple Ranges to cover from 0 to 200 ppm (especially from 0 to 50 ppm)
- Zero Noise:  $\leq 0.02$  ppm
- Lower Detectable Limit:  $\leq 0.04$  ppm
- Zero drift (daily):  $\leq 0.1$  ppm
- Span drift (daily):  $< 0.5\%$  of reading
- Response time: fast,  $\leq 100$  seconds
- Precision:  $\leq 0.5\%$  of reading
- Linearity:  $\leq \pm 1\%$  of full scale
- Operating temperature: not exceed  $40^{\circ}\text{C}$

### 3.2 Noise Measurement Methodology

The methodology adopted was to record ambient noise levels for one hour, as per the national and international standards, in the location at the proposed transmission line rout. The following devices had used during the first round of noise level measurements:

- Two B & K 2238 Mediator, Integrating Sound Level Meters, Type I (precision grade), compliant with IEC 1672 Class 1 standard;
- B & K 4198 Outdoor Weatherproof Microphone Kit;
- GPS unit (Garmin MONTANA 650); and
- Digital Camera.

Noise monitoring measurements included recording the following parameters using a Type 1 precision grade hand-held sound-level meters:

- Equivalent continuous noise level ( $L_{Aeq}$ )
- 95<sup>th</sup> percentile noise level ( $L_{A95}$ )
- 90<sup>th</sup> percentile noise level ( $L_{A90}$ )
- 50<sup>th</sup> percentile noise level ( $L_{A50}$ )

- 10<sup>th</sup> percentile noise level (LA10)
- Peak sound pressure level (LCpeak)

The following equation<sup>4</sup> is the main equation used to calculate day night equivalent sound pressure level:

$$L_{den} = 10 \log \frac{1}{n} \sum_{i=1}^n 10^{0.1(L_i + D_i)} \quad \text{Where } L_{den} = \text{Day Night Equivalent}, L_i = \text{The hourly } L_{eq},$$

$D_i$  = the addition for the different periods of the day,  $n$  = number of measured hours.

The sound level meters have been calibrated before sound measurements to ensure reliability and precision. GPS coordinates and meteorological conditions have been recorded using hand-held kits at all locations prior to the start of noise measurements. It has been anticipated that most of these locations would remain the same for the purpose of pre-construction, construction, performance guarantee tests and operation monitoring. Figure 1-1 shows the locations of the different noise measurement locations; furthermore, Table 1-1 lists the GPS coordinates of measurement locations, measurement dates, location description and a selection of photos at Quweisna city.



<sup>4</sup>The equation used to obtain the average noise level of a designated time interval based on weighted readings according to "Long-term Leq errors expected and how long to measure (Uncertainty & Noise Monitoring)", Dietrich Kuehner, Forum Acusticum 2005 Budapest.

## 4. RESULTS

The following tables present the results for ambient air quality measurements conducted at Quweisna. The objectives of the ambient air quality Monitoring activities conducted at the proposed site are:

- To verify compliance with authorized discharge limits and any other regulatory requirements concerning the impact on the public and the environment due to the normal operation of a practice or a source within a practice;
- to establish air quality baseline which will assist in the estimation of the site impact on the local physical, biological and social environment ;
- To check the conditions of operation and the adequacy of controls on discharges from the source and to provide a warning of unusual or unforeseen conditions and, where appropriate, to trigger a special environmental monitoring program.

The air qualities at the current site of the project site in the location are exhibiting acceptable levels of classic air pollutants in fact the levels are way below the national guidelines. Generation and dispersion of dust from increased vehicle traffic, especially during the daily activities, may reduce visibility, relative to baseline levels, and, together with combustion engine emissions, may affect ambient air quality. Concentration of dust particles, both total suspended particulate and respirable particulate matter and other pollutants from open burning, emissions from equipment and machinery used in transportation, the nearby plant operations and emissions from vehicles used to transport passengers also contribute to air pollution. These impacts may affect the human environment and, typically, arise during the ordinary daily activities and, to a much lesser extent, during the operation phase, requiring monitoring and assessment of the natural and man-made air pollutants.

One-hour average results for 8 hours continuous measurements have shown in Table 4-1 for all the measured parameters

**Table 4-1 daily average results ( $\mu\text{g}/\text{m}^3$ )**

Time	NO	NO <sub>2</sub>	NO <sub>x</sub>	SO <sub>2</sub>	CO (mg/m <sup>3</sup> )	PM <sub>10</sub>	T.S.P
8:00 AM	19.4	25.61	45.01	13.54	2.2	80.6	170.3
9:00 AM	11.6	27.91	39.51	21.34	2.3		
10:00 AM	9.56	30.51	40.07	19.8	2.1		
11:00 AM	19.7	23.71	43.41	17.6	1.8		
12:00 PM	13.9	26.21	40.11	17.74	1.9		
1:00 PM	22.1	24.41	46.51	19.1	2.4		
2:00 PM	11.9	29.91	41.81	17	1.7		
3:00 PM	15.1	26.22	41.32	19.5	2.1		
4:00 PM	12.6	25.01	37.61	16.16	2		
Limits	-	300	150	300	30 (mg/m <sup>3</sup> )	150	230

**Figure 4-1 NO<sub>x</sub> variation in Quweisna city**

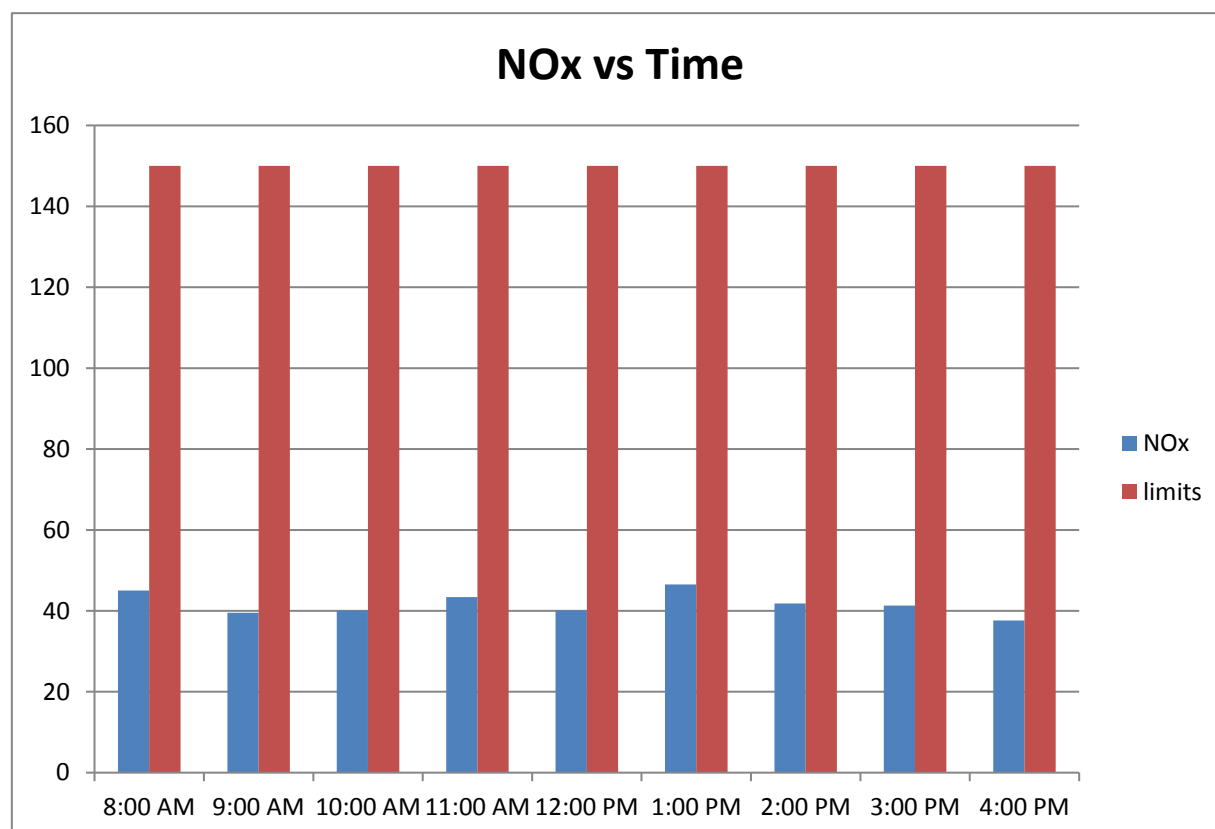


Figure 4-2 SO<sub>2</sub> variation in Quweisna city

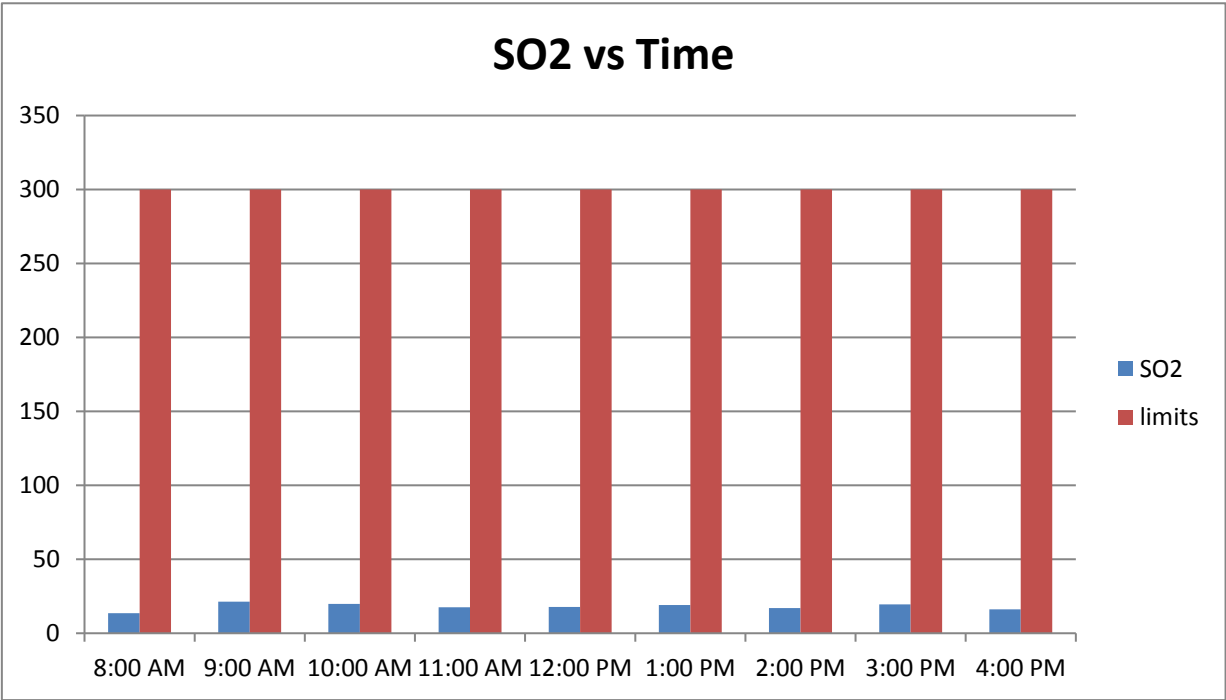
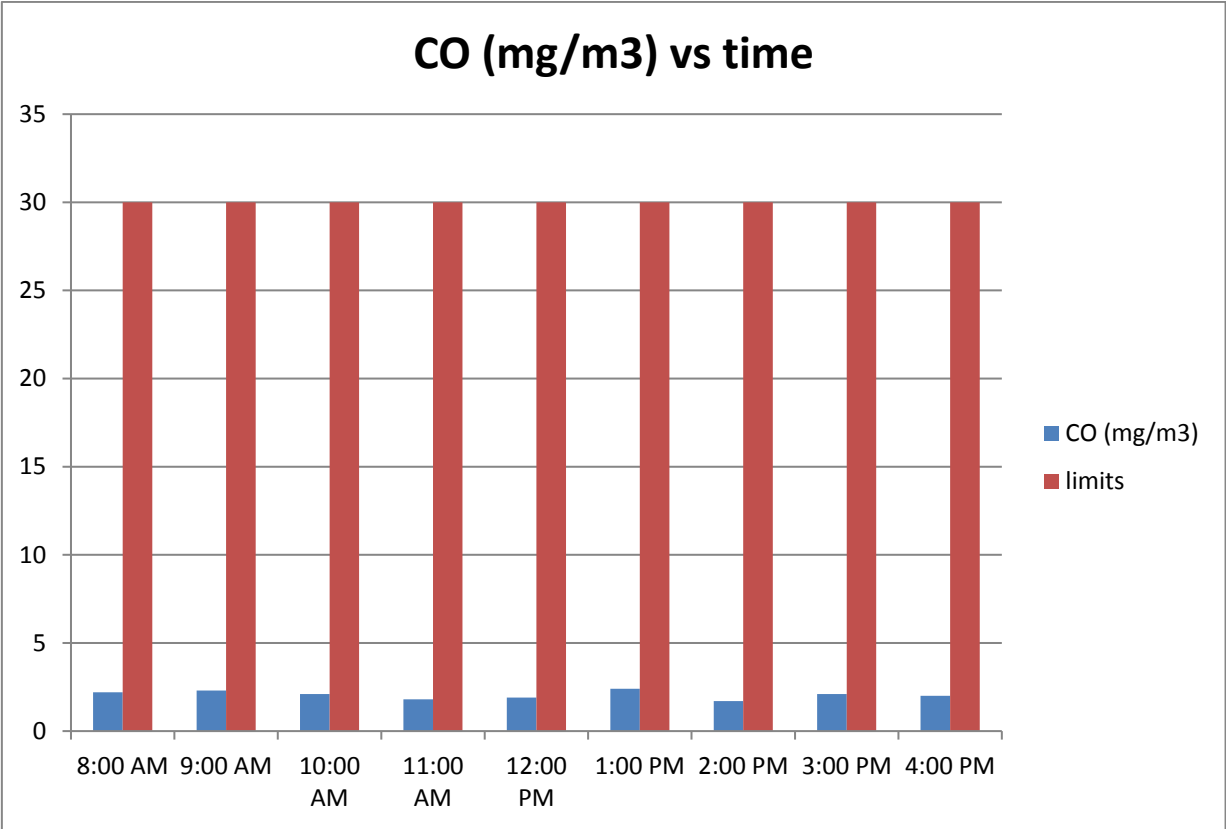


Figure 4-3 CO variation in Quweisna city





## **4.1 Analysis of air quality Results**

In general, there are two main factors affecting the ambient air concentration of a certain pollutant emitted from a certain source or sources in a selected area:

- The intensity of the emissions (e.g. concentration and flow rate) from the source or sources.
- The uncontrollable atmospheric dispersion conditions, which include but not limited to (wind speed, wind direction, temperature, humidity, rainfall, atmospheric turbulence, solar radiation intensity and atmospheric pressure).

All the recorded results showed compliance with the national and international guidelines for ambient air quality moreover, most of the data recorded were way below the guidelines, which indicates that the ambient air quality in this area are matching with guidelines of emissions released from proposed sources.

## 5. NOISE LEVELS RESULTS

Table 5-5-1 presents the results of one-hour average ambient noise measurements and their corresponding national and international permissible limits.

**Table 5-5-1 Ambient Noise Levels Readings at Quweisna 8 hours average**

Time	Sound Level Equivalent & Percentile Recordings in dBA for 8 Hours						Permissible Limits LAeq (dBA)	
	LAeq	LA10	LA50	LA90	LA95	LCpeak	National	International
8:00 PM	49.72	49.51	52.74	40.842	41.182	99.858	70	70
9:00 PM	60.86	58.05	39.024	33.312	37.742	108.408		
10:00 PM	59.02	55.86	54.444	40.612	37.712	128.848		
11:00 PM	52.42	56.37	56.28	42.022	38.972	101.658		
12:00 PM	53.81	52.53	41.8	37.042	34.682	102.588		
1:00 PM	57.02	53.51	42.55	36.772	34.082	101.458		
2:00 PM	63.79	59.93	53.34	46.862	44.802	100.818		
3:00 PM	60.4	57.66	49.65	39.522	36.082	95.128		
4:00 PM	61.02	55.02	53.01	35.45	38.12	103.02		

## **6. CONCLUSION**

Based on, the environmental monitoring and measurements performed for the ambient air quality. The results showed compliance with all the national and international guidelines

## **7. FUTURE RECOMMENDATION**

It is recommended that monitoring should continue for all the regulated parameters, in order to verify/assure compliance.

## **8. REFERENCES**

- EU directive 2008 50 EC -ANNEX I Data quality objectives for ambient air quality assessment
- D1357-95 (Reapproved2000) Standard Practice for Planning the Sampling of the Ambient Air
- Egyptian Law 4/1994 Amended by law 9/2009 and Decree 1741/2005, amended by decree 1095 /2011 Annex 6 (amendments to executive regulations of Law 4).

## **Appendix I - Selection of Photos from the Air Quality and noise Monitoring activities**















